




**SATA**



## **Our Innovations**

Developed for the most important part of the process. For you.



Get ready for a whole new level on the following pages. The best paint spray gun which has ever left our factory. A cup system that has not been available from SATA before. A filtering half-mask which sets a record in its class. And further products which set standards in their category.

These products originate from different fields, but have one thing in common: They were developed with the aim to make your work easier, safer and more efficient.

**In summary: The focal point in our projects is you.**

**SATA. Passion for painters.**

jet X

adam X / adam X pro

LCS - The Liner

air star F 2.0

SATA suit Standard



## jet X. Works for you.

Creating a flawless paint finish is a demanding task. It requires skill, experience and a great deal of dedication.

### **It is a job for professionals.**

With the jet X, we have designed the ideal tool for the job. A paint spray gun that helps you achieve the highest quality - and makes it easier than ever before. A piece of equipment into which all our experience as well as the feedback of the painters have been incorporated.

### **The paint spray gun that works for you.**



It's a SATA.

In our latest development, we have further refined what has characterised our products for decades: the nozzle technology. The jet X also comes with completely new digital functionality. And a completely new shape - but one that is still characteristically SATA.

## The advantages

It has never been so easy to achieve such good results.

The nozzle system is the centrepiece of the paint spray gun. It is decisive for the final result. And it is what makes the difference - between good and outstanding.

The nozzle concept of the jet X is based on the innovative labyrinth airflow system. It guides the air in the nozzle in such a way that it exits each orifice at exactly the same pressure and free of turbulence and pulsation. This enables us to achieve exceptionally fine and homogeneous atomisation - and a new level of surface quality, both for HVLP and RP technology.

The spray pattern remains absolutely uniform over its entire height. It has clearly defined fade-out zones and is easy to handle - for a controlled and immediate application feel.

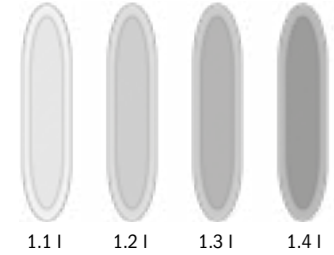
Cloud formation and flow disturbances in the basecoat are minimised, while the finer atomisation in the clearcoat results in perfect wetting and better surface quality. Even with more difficult materials, such as metallic paints, the jet X delivers convincing results across the board.

**This is what we mean when we say: This gun works for you. For professionals it has never been so easy before.**

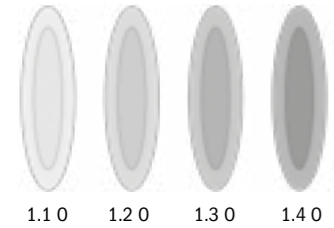
INFO  
[www.sata.com/jetx](http://www.sata.com/jetx)



## I/O = Control and Speed



I-nozzle "Control" with HVLP/RP



O-nozzle "Speed" with HVLP/RP

The jet X nozzles are available in two fan shapes:

The "I", or "Control", nozzles produce a longer spray pattern with an even material distribution. They have a slower application speed but offer maximum control.

The "O", or "Speed", nozzles have an oval fan shape with a larger fade-out zone and a wetter core, which results in a higher application speed.

This means that every painter can choose the nozzle system that suits their own preferences and application technique.

Regardless of which nozzle type is selected, the respective fan dimension remains constant across the different nozzle sizes. Only the material throughput changes linearly with the size.



### Looks good for you: the design

With its matt black exterior and red accents, the jet X shows that style and hard work can certainly go hand in hand. It also marks the beginning of a new design era at SATA.

### Balanced - in every respect

The jet X DIGITAL ready is approx. 50 grams lighter than its predecessor, the SATAjet X 5500. The ergonomic gun body sits comfortably in the hand and is balanced so that it does not become top-heavy even with a large filled cup.

### Easy to clean: the detachable trigger

The trigger made of technical polymer can be removed in one easy step - without tools and without snap rings. This makes maintenance easier and cleaning more thorough. Clever additional benefit: the integrated tool can be used to loosen or tighten the fluid tip.

### 3 in 1: the innovative air inlet

The air micrometer for setting the dynamic inlet pressure is located at the air inlet. It allows convenient and precise adjustment of the air pressure. The practical swivel joint is also integrated.

## The jet X in detail



INFO  
[www.sata.com/jetx](http://www.sata.com/jetx)



\* Not available in DE, AT, BE, NL, LU, CH

## The most digital SATA of all time



### jet X BASIC\* - The entry level into the X Dimension

The jet X is available in four versions. The jet X BASIC is the basic analogue version - with all the advantages of the nozzle technology and ergonomics, but without the option of digitalisation with an adam X or an adam X pro. Digital pressure measurement can be retrofitted to the air inlet with the SATA adam 2 U.

### jet X DIGITAL ready - Get ready for all options

The jet X digital ready is optimally prepared for digitisation with the SATA QAC (Quick Adam Connector). An adam X or adam X pro can be connected directly to the paint spray gun without a docking station. Do you want your jet X to remain an analogue spray gun as standard? In that case, you can use a QAC cover with hand rest to replace the adam X and ensure ideal ergonomics.

### jet X DIGITAL - All parameters at a glance

In addition to the nozzle technology and ergonomics, the jet X DIGITAL also features other innovative features that contribute to convenience and process reliability. The adam X digital unit offers various basic digital functions that make the professional's everyday life in the paint booth easier. For example, the inlet pressure is displayed in large and easy-to-read digits. This makes setting the correct pressure much easier. The display can be switched from bar to psi. In addition, the adam X displays the ambient temperature - an important parameter, especially as it measures the temperature where it matters: in the paint booth. The adam X also displays the operating time and battery status. Practical feature: the display is controlled by double-tapping, which is convenient and safe even when wearing gloves.

### jet X DIGITAL pro - For anyone who desires the maximum

The jet X DIGITAL pro offers the full range of digital functions. Its digital unit, the adam X pro, helps the painter analyse and control the painting process. In line with the "works for you" principle, it therefore helps to optimise results.

The main screen of the adam X pro shows the dynamic inlet pressure - and much more: It also displays any deviations from the target pressure that has been set. If this deviation exceeds 0.2 bar, an optical alarm is triggered.

In this way, jet X DIGITAL pro plays an important role in avoiding costly errors. This is because a pressure deviation of just 0.2 bar can lead to changes in the colour effect of metallic and mother-of-pearl shades.

The adam X pro also provides information on the ambient temperature and battery status. The digital unit also keeps

precise records of operating hours, painting time and the number of trigger pulls, i.e. how often the trigger was actuated.

The various functions of the digital unit are called up and selected by double-tapping as well as by tilting the gun.

Once a job has been completed, the adam X pro generates a summary of the selected settings and values. This data can be transferred to a digital dashboard on a PC or smartphone - perfect for monitoring and analysing the painting process. The data is transmitted to the dashboard via a specially generated QR code on the display of the adam X pro.

By making the painting process so transparent and easy to monitor, we give painters the greatest possible control over the settings of their paint spray gun and their influence on the final result. For maximum process reliability and reproducibility. Simply put, it's a good feeling to have the data in front of you and all the important settings under control. Because the jet X digital pro helps achieve the best results and avoid painting errors.

The adam X pro is very easy to attach and remove - without a docking station or adapter. The parameters can be analysed for two jet X paint spray guns.



	jet X BASIC*	jet X DIGITAL ready	jet X DIGITAL	jet X DIGITAL pro
Innovative labyrinth airflow system	X	X	X	X
Two fan shapes: I-nozzle: control / O-nozzle: speed	X	X	X	X
Air inlet with swivel joint and air micrometer	X	X	X	X
Removable trigger with tool for the fluid tip		X	X	X
QAC (Quick Adam Connector)		X	X	X
Basic configuration		adam X/X pro retrofittable	adam X	adam X pro
Inlet pressure display		(1) (2)	X	X
Conversion bar/psi		(1) (2)	X	X
Target pressure input		(2)		X
Alarm function for when system exceeds or falls below the target pressure		(2)		X
Operating time indicator		(1) (2)	X	X
Ambient temperature indicator		(1) (2)	X	X
Conversion °C/°F		(1) (2)	X	X
Battery status indicator		(1) (2)	X	X
Double-tap operation		(1) (2)	X	X
Tilt operation		(2)		X
ePaper display		(2)		X
Data on operating hours, painting time and number of trigger pulls		(2)		X
Transfer of important parameters to the digital dashboard		(2)		X

\* Not available in DE, AT, BE, NL, LU, CH

(1) adam X (2) adam X pro

In the jet X, we have invested all our expertise in developing a very special paint spray gun. The reference in the premium class. But with a tool like this, it's the feel and personal impression that count.

**That's why the best thing is to experience it for yourself. At an appointment with our sales representatives, at a trade fair - and, of course, in specialist stores. You can find a list of dealers at [sata.com](http://sata.com) under Service/Distribution partner search.**

Further information at [sata.com/jetx](http://sata.com/jetx)



### SATA Premium Warranty:

On request, we extend your warranty to 3 years - free of charge. Simply register here with your new jet X:



# A digital world for jet X.

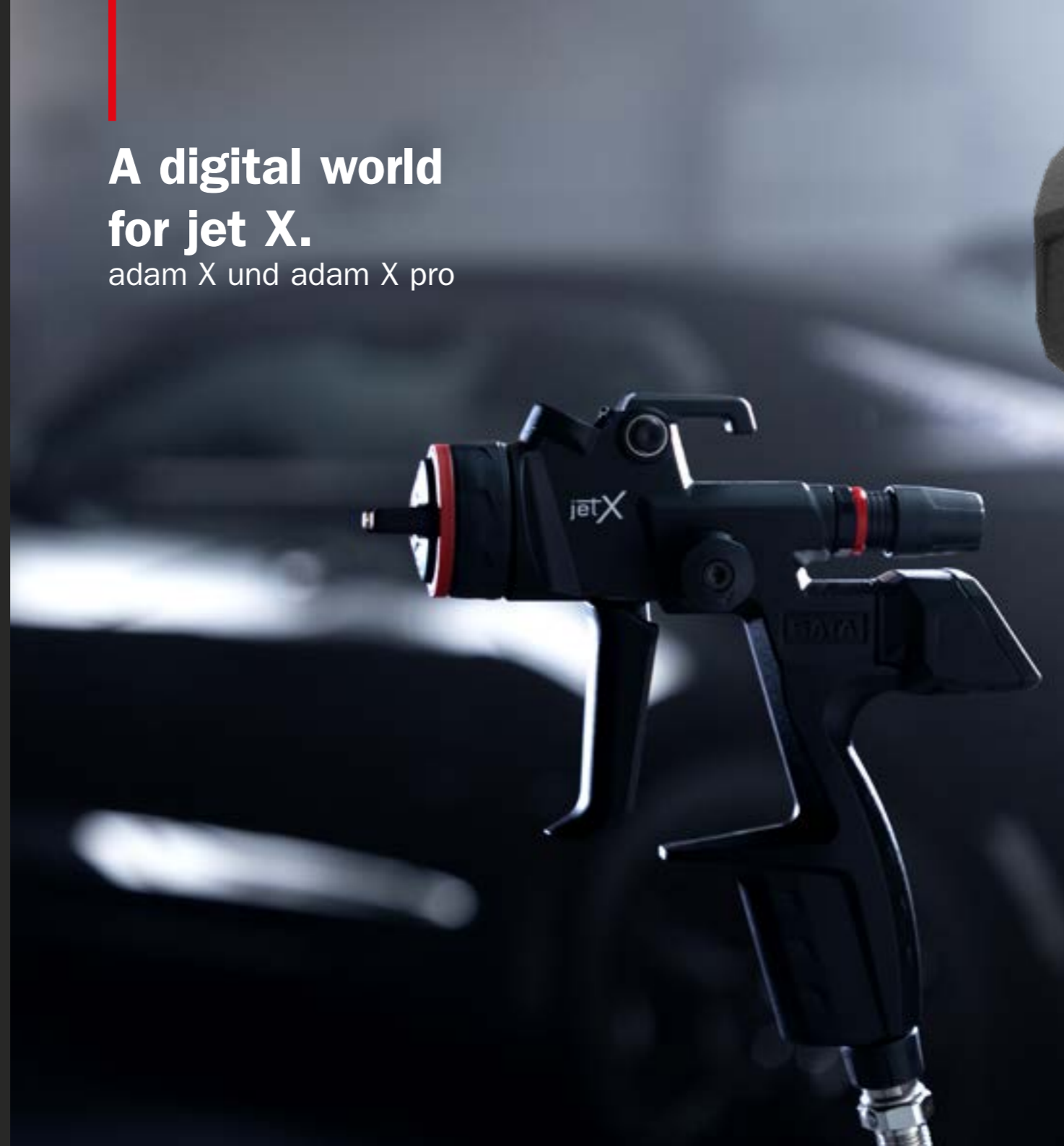
adam X und adam X pro

A digital unit with special capabilities. Perfect for you.

The jet X is the most advanced paint spray gun from SATA. With its innovative nozzle concept, it achieves a new outstanding surface quality for basecoats and clearcoats. It helps you achieve better finishes more easily.

The digital units of the adam X series allow you to standardise and reproduce these results at a high level.

With their diverse functions, they support you in making processes transparent and avoiding errors.



adam X and adam X pro for the use on the jet X DIGITAL ready

Equipped with the QAC, the Quick Adam Connector, it is the basic model for the use of the digital units.



Or you can decide in favour of the digital options straight away: for paint spray guns that are already equipped with these useful digital features as standard - the jet X DIGITAL and jet X DIGITAL pro.

## The adam X

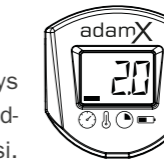


The adam X is SATA's entry into the digital world of painting. It is particularly compact and clearly laid out - and is particularly suitable for those who primarily want to use the basic functions.

The adam X displays the inlet flow pressure, the ambient temperature, the operating time and the battery status. The menu items are selected with a tap on the housing. This is simple and practical, even with gloves. The slim digital unit is easy to mount on the jet X with a quarter turn. A docking station is not required.

### Dynamic inlet pressure

Digital and precise. The adam X displays the dynamic inlet pressure - and the reading can be switched between bar and psi. This makes it easy to set the pressure precisely using the air micrometer on the air inlet and keep an eye on the adam X.



### Ambient temperature

The adam X shows the exact temperature in the paint booth - the place where it matters most. The display can be switched from °C to °F.



### Operating time

How many hours has the paint spray gun or nozzle set been in operation? The adam X keeps track - and tells you when it may be necessary to change the nozzle set.



### Battery status

The adam X is extremely economical with its battery - nevertheless, it cannot hurt to keep an eye on its battery level every few weeks. The adam X indicates battery level as a percentage.



INFO  
[www.sata.com/adamx](http://www.sata.com/adamx)



# The adam X pro



The adam X pro offers an unprecedented range of digital functions. This helps the professional in the paint booth analyse and control the painting process - with an unprecedented level of information and accuracy.

This is far more than just "luxury": data analysis helps the painter to improve. It helps to optimise results and avoid painting errors such as uneven material distribution and cloud foamation thanks to precisely reproducible parameters.

The operation of the device follows a concept that was developed with the conditions in the paint booth in mind. It is completely new - but you can familiarise yourself with it in just a few minutes: the various functions are selected by double-tapping the side of the housing or by tilting the gun.

The ePaper display shows the various contents in an easy-to-read font and graphics.

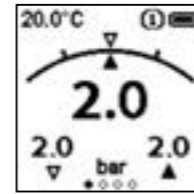
The adam X pro is mounted straight on the jet X with a quarter turn - without a docking station or adapter. The parameters can be analysed for up to two jet X paint spray guns.

## The functions of the adam X pro

The menu structure is orientated towards the needs of professionals who work with the jet X on a daily basis. It is divided into two levels: the first level shows the main screen - it is always the first screen to appear after activating the adam X pro. Also on the main level: the statistics and the QR generator for transmitting data to the digital dashboard. The settings are found on the second level.

### The main level

#### The most important values at a glance: the main screen



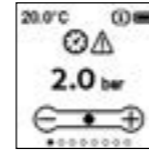
The main screen shows the most important parameters in a clearly organised display:

- The current actual pressure
- The previously set target pressure
- Deviations between actual and target pressure in a graphical visualisation
- An alarm symbol if the actual and target pressure differ by more than 0.2 bar (3 psi)
- The dynamic pressure that was applied when the trigger was last actuated
- Also: The ambient temperature and battery status

During painting, the display changes to a simplified, clearer display.

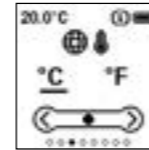
## The settings level

### Target dynamic pressure



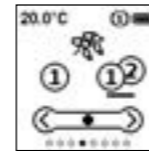
What specifications does the paint manufacturer provide? What are your personal preferences? The target value for the dynamic inlet pressure is set here. This value is also displayed on the main screen, shown in comparison with the actual pressure in a graphical visualisation. Deviations of more than 0.2 bar trigger an optical alarm.

### Pressure and temperature units



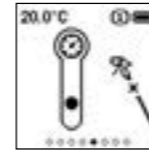
The pressure and ambient temperature displays can be easily switched: from bar to psi and from °C to °F.

### Multi-gun mode



The adam X pro can be used with two paint spray guns. When multi-gun mode is activated, a menu appears when the compressed air hose is connected in which the paint spray gun currently in use can be selected.

### Other settings



Other functions can also be found at the settings level: calibration of normal pressure, information on hardware and software versions and resetting the statistics.

## The statistics

The adam X pro keeps precise records of operating hours, painting time and the number of trigger pulls, i.e. how often the trigger was actuated.

## The digital dashboard

The best database only makes sense if it is also analysed. To make this easier, the adam X pro can be connected to a personal dashboard on a PC or smartphone. This is a digital control centre in which the most important parameters of the painting process can be stored and analysed. The data is transmitted via a QR code that is shown on the display of the adam X pro.

Additionally, with each scan you can also profit from our SATA Loyalty Program.



## adam X and adam X pro in comparison

	adam X	adam X pro
Mounting on the QAC without docking station	X	X
Inlet pressure indicator	X	X
Conversion bar/psi	X	X
Target pressure input		X
Alarm function for when system exceeds or falls below the target pressure		X
Gun operating time indicator	X	X
Ambient temperature indicator	X	X
Conversion °C/°F	X	X
Battery status indicator	X	X
Double-tap operation	X	X
Tilt operation		X
ePaper display		X
Data on operating hours, painting time and number of trigger pulls		X
Transfer of important parameters to the digital dashboard		X

Expand your possibilities.

Further information at [sata.com/adamxpro](https://sata.com/adamxpro) and from specialist retailers. You can find a list of dealers at [sata.com](https://sata.com) under Service.



## The liner - reimaged by SATA

Do you have highest expectations concerning the performance of your paint spray gun, but prefer working with liner cups? In this case, you need an adapter to mount it on your SATA spray gun. We have now eliminated the need for this interim solution - and offer you even more on top.

The Liner Cup System from SATA fits onto the QCC connection of your paint spray gun. The adapter is no longer required, and there are many additional advantages:

- More favourable centre of gravity
- Easier cleaning
- Low weight
- Less damage to your paint spray gun

LCS is available in three cup sizes: 0.40 litre, 0.65 litre and 0.85 litre.

**The liner - in a new design**



## The advantages

**Particle-free: the premium strainers**

Quality is evident in the detail: The strainers of the LCS are manufactured separately in top quality - and tested. They are only clicked into the lid just before painting. This ensures that no paint-disturbing particles impair the final result.

**Stays in place: the safety lock**

The lid on your LCS cup closes extremely securely: the quadruple bayonet reliably locks in place - and shows at a glance that it is correctly secured.

**In the flow - down to the last drop: extra soft liner**

The liner itself, i.e. the inner cup, is made of extra soft and thin material. It collapses particularly easily and thus enables an easy and even material flow.

**For easy mixing: the SATA scale system**

SATA as we know it: the complete and detailed scale system. Tried and tested - and precise. An upside-down scale shows the remaining quantity during painting.

INFO  
[www.sata.com/lcs](http://www.sata.com/lcs)





## Crystal clear: the hard cup

The outer cup (hard cup) is made of strong and highly transparent material and fits the inner cup perfectly. This allows you to mix as precisely as with a single-walled cup.

## The SATA among the liner cups

Just one cup (liner) among many? Not with SATA! Indeed, we have developed the one system you need. The liner that will become your absolute favourite. The cup that you can handle easily, that is safer and more practical and fits like no other.



## Liner Cups?

There are two different types of flow cups for paint spray guns. With the so-called vented cups, the material simply flows towards the colour channel due to gravity - the cups have a vent so that no vacuum forms.

For vented cups, we offer RPS as the smartest solution for perfect finishes available on the market. Die-hard users of liner cups instead will now also find the best solution at SATA.

Liner cups consist of two components. The outer cup (hard cup), which is reused, and the soft inner cup, the liner. When pulling the trigger of the paint spray gun, a vacuum is created inside the inner cup which gradually collapses until completely empty. This ensures the constant flow of paint material.



LCS -  
THE LINER



RPS -  
THE ORIGINAL



Worthwhile in every respect. Especially for loyal customers.

The LCS rewards your loyalty! What this means for you: If you take part in the SATA loyalty programme “coins & more”, you can collect lots of SATA coins with LCS and exchange them for attractive rewards in the Loyalty Shop. Information can be found here:



Please note that the SATA loyalty programme coins & more is not available in all countries.

SATA quality. Now also as a liner.

You can find more information at [sata.com/lcs](https://sata.com/lcs)



**Respiratory protection is essential. And now it is lighter and more comfortable.**

Respiratory protection is also a top priority for smaller jobs outside the paint booth. As your partner for high-quality respiratory protection solutions, we ask you to take care of your health. And we can do one better: we can make it as pleasant as possible for you.

The air star F 2.0 is the new filter half-mask from SATA. We have developed it for shorter jobs and smaller tasks in the paint shop, such as spot repairs or preparatory work.

**It comes with numerous new features to ensure you enjoy wearing it as much as possible.**



**air star F 2.0**  
Respiratory protection made easy.



## The advantages

### Low weight

Weighing just 325 grams, the air star F 2.0 is significantly lighter than its predecessor model. In this way, we want to help avoid tension and muscle pain when wearing. In addition, the mask is less noticeable when turning the head.

### Enlarged field of vision

The filters of the air star F 2.0 are slightly flatter, and they also sit lower and further back than on previous models. This results in a larger field of vision and the mask is perceived less as a disruptive factor in terms of vision.

### Improved wearing comfort

Compared to the previous model, we were able to significantly improve the fit and comfort of the air star F 2.0. The anatomically shaped mask body made of skin-friendly TPE adapts to any face shape.

### Filter cartridges with click system

The filters of half-masks must be changed regularly. With its simple click system, the air star F 2.0 makes filter replacement a breeze. Plus it is fast.

INFO  
[www.sata.com/airstar2](http://www.sata.com/airstar2)



## New design

And that is not all: a filter half-mask can look really good, too. The air star F comes in elegant black with red accents.

## Practical head band

Once adjusted, the head band of the air star F 2.0 retains its setting. The mask always fits straight away. If you take it off and leave it hanging around your neck, you can put it back on again in no time at all and without having to readjust it.

## When quality is not only important, but crucial

We place great importance on quality when it comes to paint spray guns. It is only logical that we do the same with our respiratory protection products. Especially with things that are so important and that you wear so close to your body, you should feel that they have been designed down to the last detail and incorporate the best workmanship.

We recommend a half-mask such as the SATA air star F 2.0 even for smaller painting or sanding jobs. It is better to wear them once too often than once too little; please also remember to protect your hair and skin.

Do not forget: like with any other half-mask, the filters of the air star F 2.0 must be changed at least once a week, or sooner depending on use. This ensures that the half-mask remains functional and that the wearer is protected. Between jobs, you should store the mask in an airtight container - either in the box in which it is supplied or in the SATA hygiene box.

## The protection class

The air star F 2.0 is equipped with special filters. These combination filters protect the wearer against organic gases and vapours on the one hand and particles, oil and water vapours on the other. The classifications A2 (protection against organic gases and vapours, boiling point > 65°C) and P3 (protection against particles, i.e. fine dust, as well as oil and water vapours up to 30 times the occupational exposure limit) are testimony to this, like with any other half-mask. The "R" stands for "reusable". This means that the special filters of the air star F 2.0 are reusable and can therefore be used for more than one work shift. They must be replaced after one week at the latest.

## Recommended accessories

Pre-filter  
Pre-filter holder  
Special filter



Play it safe with respiratory protection. Don't risk anything but the best.

Further information at [sata.com/airstar2](https://sata.com/airstar2) and from specialist retailers. You can find a list of dealers at [sata.com](https://sata.com) under Service.



# SATA suit Standard

When quality is your style.



There are many things you should pay attention to when painting. The most important of these is yourself. In addition to the respiratory tract, it is above all your skin that you should protect from harmful influences.

The suit Standard is the new paint suit from SATA, which has been specially developed for the requirements of the job. With optimum protection, a practical cut and clever details. In the quality that you have come to expect from us.

The fact that the suit Standard also looks good and its design clearly makes its wearer stand out as a professional - all the better.

The suit Standard is available in various men's and women's sizes.

## The advantages

### Dressing comfort: the fit

Hard workers need comfort more than anyone. The suit Standard is designed for comfort and freedom of movement without being too wide or bulky. It has an ergonomic cut and is equipped with numerous adjustment options: for instance, it features an adjustable stand-up collar, waist adjustment with an internal elasticated tab, sleeve cuffs and elasticated leg cuffs. The long 2-way zip makes it easy to put on and take off - it is covered by a placket and therefore protected from dirt.

### The paint job isn't the only thing that looks great: the design

The SATA suit Standard comes in all black with red colour accents. The large SATA logo on the back shows that experts are at work here. Professionals with taste, mind you.

### Made for the task: the material

Impermeable to paint mist, free from paint-damaging substances, low-lint, antistatic and particularly abrasion-resistant: The SATA suit Standard is made for use in the paint booth - it's simply the right gear for the job.

### Breathable - for a good working atmosphere

The SATA suit Standard is particularly breathable. Special air-permeable fabric in the back, underarm and crotch area supports air circulation and counteracts heat build-up. The suit Standard is extremely comfortable to wear - and is also recommended for longer periods of use.

### What it all comes down to - the details

Organises your daily work routines: the suit Standard for

men has one breast pocket, one back pocket and two side slit pockets, each with a concealed zip. Perfect for tools or other items that need to be quickly to hand. The suit Standard for women has a second back pocket instead of a breast pocket.

### On top: the hood

The new SATA painting suit comes with a hood - as standard. It protects the hair during jobs where a full face-face mask is not used. With a neck guard and an elasticated face opening with a drawstring and stoppers.



Quality suits you.

Further information at [sata.com/suitstandard](http://sata.com/suitstandard) and from specialist retailers. You can find a list of dealers at [sata.com](http://sata.com) under Service.



# SATA

SATA GmbH & Co. KG  
Domertalstrasse 20  
70806 Kornwestheim  
Germany  
Tel.: +49 7154 811-200  
Fax: +49 7154 811-194  
E-Mail: [export@sata.com](mailto:export@sata.com)  
[www.sata.com](http://www.sata.com)

